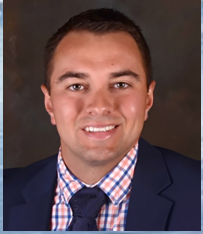


## President's Forum



**Matt Burke, CPCU**  
Chapter President

### Time to “Slow Down”

For most of us, learning a new role or position included having a colleague mentor us during our first few weeks. I can't recall each mentor I have had or piece of advice I received, but I specifically recall one mentor whose words have had a lasting impact on my career today, 10 years later. I vividly remember where in the building he mentored me, the cubicle, and even how we sat.

The advice wasn't critical, or demeaning. It was simple: “Slow down.” We were looking at homeowners policies I had reviewed. While the quantity and quality were deemed favorable by my mentor, I overlooked some small but important details. “Your work looks good, keep it up,” he said. “But remember, slow down.”

I reflect on that advice, but in a broader sense. Think about our new work environment. Do you feel busier? Running from Zoom meeting to Zoom meeting, answering questions that need immediate attention, taking on new (additional) projects, caring for children who may need to stay home from school or daycare ... the list goes on. How often do you find yourself working through lunch or after 5?

It's a different work environment now in more ways than one. It's something we should consider all aspects of. I think we *need* to. I'm hopeful we continue to progress to work normalcy, where we can all “slow down,” appreciate our jobs and focus on the minor details. I'm optimistic we will, too.

No inquiring about New Year's resolutions from me. Keep up the good work. Keep going!

## Your 2022 Chapter Board

**President:**  
Matt Burke, CPCU

**Treasurer:**  
Tricia Thelen, CPCU

**Directors:**  
Candace Trumble, CPCU

**Immediate Past President:**  
John Schmidt, CPCU

**Vice President:**  
Mike Giancotti, CPCU

**Secretary:**  
Samantha Cheadle, CPCU

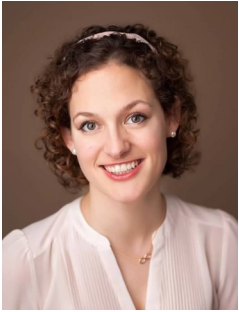
Libby Fox, CPCU

Nicole Scott, CPCU

## Meetings

## January Speaker Spotlight

**Susan Gisholt**  
**Manager, Talent Strategies**  
**Delta Dental Michigan, Ohio and Indiana**



Susan Gisholt, manager, talent strategies, joined Delta Dental of Michigan, Ohio and Indiana in 2021. By translating business goals into human resource strategies, she ensures Delta Dental has the talent needed to carry forward its mission to build smart, healthy communities for all.

In addition to external talent acquisition and organizational effectiveness, Gisholt oversees talent management, a broad category that includes identifying and developing key talent across the organization, establishing career development opportunities for employees, and expanding relationships with schools and colleges to increase its talent pipeline into the organization.

Prior to her current role, Gisholt served in various human resources roles in the insurance and manufacturing industries.

Gisholt currently serves on the Sparrow Hospital Foundation's Women Working Wonders and the Junior League of Lansing.

She earned her bachelor of general studies in art history, philosophy and Italian degree from the University of Michigan, and her master of human resources and labor relations degree from Michigan State University.

## January Meeting Information

**Date:** Friday, January 28 **Time:** 11:30 a.m.

**Where:** Held via Zoom

## Call-In Information:

- **Zoom Meeting Link:**  
<https://us06web.zoom.us/j/81402150793?pwd=UjJoUHd4M0tvWlQzSDZ6eWlHMzRTQT09>
- **Meeting ID:** 814 0215 0793
- **Passcode:** 444963

**Contact:** Email Mike Giancotti at [giancotti.mike@aoins.com](mailto:giancotti.mike@aoins.com)

Mid-Michigan Chapter  
CPCU Newsletter

Published monthly from  
September through June

**Editor:**

Andy Flanagan, CPCU  
 Auto-Owners Insurance  
 Company  
 6101 Anacapi Boulevard  
 Lansing, MI 48917-3968

Phone: (517)886-1980  
 Fax: (517)886-8750  
[flanagan.andy@aoins.com](mailto:flanagan.andy@aoins.com)

The submission  
 deadline for the  
 February newsletter is  
**Feb. 4**

If you know of promotions  
 or other noteworthy ac-  
 complishments involving  
 CPCUs, please send them  
 to the editor using any of  
 contact methods listed.

Future CPCU Annual  
Meeting Sites

Nov. 10-12, 2022: San Francisco

Future Chapter  
Meeting Dates

February: TBA

Connect with us on Facebook and LinkedIn at Mid-Michigan CPCU Society



## Chapter News

### 2021 Good Works Recipient: Ele's Place – Capital Region

Ele's Place is a non-profit, community-based organization dedicated to creating awareness of and support for grieving children and their families. With 30 years' experience and more than 30,000 individuals served, four branch locations across the state of Michigan, Ele's Place provides onsite and school-based bereavement programming for children ages 3-18 who have experienced a death in their lives. These programs are provided at no cost to families and provide children and teens an opportunity to safely grieve.

Kristine Kuhnert, Director of Ele's Place – Capital Region, highlighted past accomplishments, ongoing operations, and future goals during our December meeting. She also accepted a donation on their behalf.

If you're interested in finding out more, volunteering, or donating, please visit [www.elesplace.org](http://www.elesplace.org) or call at 517.482.1315.

Special thank you to Chapter members Olivia Bowen and Ryan Humphrey for their help managing and organizing our Good Works project.



### Board Member Bios: Samantha Cheadle and Tricia Thelen

We have two new board members in 2021: Samantha Cheadle is our Chapter's secretary and Tricia Thelen is treasurer.

Here are their biographies:



**Samantha Cheadle:** Samantha is a business analyst at Auto-Owners Insurance. She has been in the insurance industry since 2010. Samantha graduated from Albion College with a bachelor's degree in economics and management.

Samantha earned her CPCU designation in 2015. She lives in Laingsburg with her husband, Adam, and their two sons, Henry and Harrison.



**Tricia Thelen:** Tricia is a personal lines supervisor at Auto-Owners Insurance, where she's been for 14 years. She graduated from Baker College with a bachelor's degree in accounting.

Tricia earned her CPCU designation in 2018 and holds several other designations. She lives in Westphalia with her husband, Kyle, and their two sons, Jacob and Henry.

## **2022 Board Members and Committee Chairs**

<b>Position</b>	<b>Individual</b>
Nominating Committee and Past President	John Schmidt
President	Matt Burke
Vice President	Mike Giancotti
Treasurer	Tricia Thelen
Secretary	Samantha Cheadle
Director	Libby Fox
Director	Candace Trumble
Director	Nicole Scott
Membership	Heather Fishel
Scholarship	Emma Zelinski
Circle of Excellence/Education	By Committee
Web Master	Mike Armbrustmacher
Good Works	Lacey Payne
Newsletter	Andy Flanagan
I-Day	By Committee
New Designee	Heather Fishel
Golf Outing	Heather Fishel
Social Media Chair	Olivia Bowen